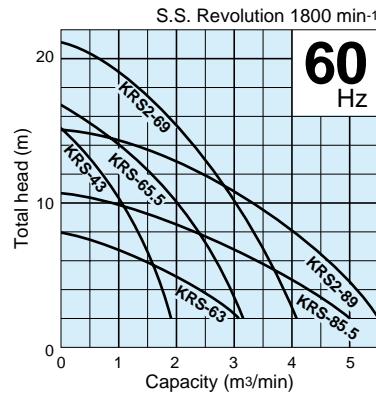
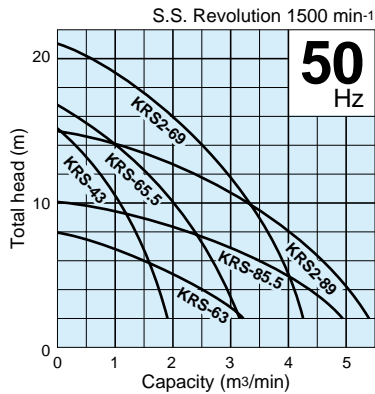


The low head version is equipped with a specially developed motor to minimize unnecessary power consumption for maximal cost economy.

Performance Curves



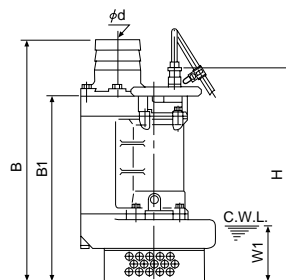
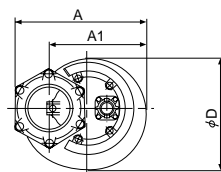
Specifications 50/60Hz

| Discharge Bore mm | Model | Motor Output kW | Phase | Total Head m | Capacity m³/min | Starting Method | Dry Weight kgs | Length of Cabtyre Cable m |
|-------------------|----------|-----------------|-------------|--------------|-----------------|-----------------|----------------|---------------------------|
| 100 | KRS-43 | 3.0 | Three-phase | 10 | 1.0 | D.O.L. | 95 | 8 |
| 150 | KRS-63 | 3.0 | Three-phase | 5 | 2.0 | D.O.L. | 95 | 8 |
| 150 | KRS-65.5 | 5.5 | Three-phase | 10 | 2.0 | D.O.L. | 115 | 8 |
| 150 | KRS2-69 | 9.0 | Three-phase | 16 | 2.0 | D.O.L. | 155 | 8 |
| 200 | KRS-85.5 | 5.5 | Three-phase | 5 | 3.8 | D.O.L. | 125 | 8 |
| 200 | KRS2-89 | 9.0 | Three-phase | 8 | 4.0 | D.O.L. | 175 | 8 |

• Dry weight of the pump excluding cable.

Dimensions Unit:mm

C.W.L.: Continuous Running Water Level



| Model | d | A | A1 | B | B1 | D | H | W1 |
|----------|-----|-----|-----|-----|-----|-----|-----|-----|
| KRS-43 | 100 | 378 | 288 | 723 | 561 | 347 | 622 | 170 |
| KRS-63 | 150 | 384 | 294 | 866 | 686 | 365 | 747 | 300 |
| KRS-65.5 | 150 | 425 | 305 | 790 | 608 | 370 | 669 | 190 |
| KRS2-69 | 150 | 490 | 372 | 812 | 630 | 424 | 742 | 200 |
| KRS-85.5 | 200 | 446 | 326 | 941 | 710 | 413 | 771 | 295 |
| KRS2-89 | 200 | 473 | 355 | 933 | 701 | 408 | 813 | 300 |



Major Standard Specifications

| Item | | Discharge bore (mm) | | |
|----------------------|------------------------------|--|---|-----|
| | | 100 | 150 | 200 |
| Pumping fluid | Type of fluid | Rain water, Ground water, Sand carrying water | | |
| | Liquid temperature | 0 ~ 40°C | | |
| Pump | Components | Impeller | Semi-open type, Closed type (KRS-63-85.5) | |
| | | Shaft seal | Double mechanical seal | |
| | | Bearing | Shielded ball bearing | |
| | Materials | Impeller | Ductile iron casting | |
| | | Casing | Gray iron casting | |
| | | Suction cover | Gray iron casting | |
| | Shaft seal (mechanical seal) | Silicon carbide | | |
| Motor | Type, Poles | Dry-type submersible induction motor, 4 poles | | |
| | Insulation | Class E, B | | |
| | Phase / Voltage | Three-phase / 220V, 380V, 400V, 415V, 440V, 460V | | |
| | Motor protector (Built-in) | Circle thermal protector | | |
| | Lubricant | Turbine oil (ISO VG32) | | |
| | Materials | Frame | Gray iron casting | |
| Shaft | | Stainless steel #420 | | |
| Cable | | Chloroprene rubber | | |
| Discharge connection | | Hose coupling | | |

Standard Accessories

- Cabtyre cable 1pc
- Hose coupling 1pc

Optional Specifications

- Extended cable
- Special paint